

H363

SWITCH FUSIBLE HD 600V 100A 3P NEMA1

Product availability : Stock - Normally stocked in distribution facility



Price** : 1,188.00 USD



H363 has not been replaced. Please contact your customer care center for more information.

Main

Product	Single Throw Safety Switch
Current Rating	100 A
Certifications	UL listed file E2875
Enclosure Rating	NEMA 1 steel
Factory Installed Neutral	None
Disconnect Type	Fusible disconnect
Short Circuit Current Rating	10 kA H or K 200 kA R, J or L
Mounting Type	Surface
Number of Poles	3
Electrical Connection	Lugs
Duty Rating	Heavy duty
Voltage Rating	600 V AC/DC
Wire Size	AWG 12...AWG 1/0 aluminium AWG 14...AWG 1/0 copper

Complementary

Width	260.35 mm (10.25 in)
Height	539.75 mm (21.25 in)
Depth	162.05 mm (6.38 in)
Tightening torque	5.65 N.m (50 lbf.in) AWG 1...AWG 3/0 5.08 N.m (45 lbf.in) AWG 6...AWG 4) 4.52 N.m (40 lbf.in) 0.01 in ² (8.367 mm ²) AWG 8) 3.95 N.m (35 lbf.in) 0.00...0.01 in ² (2.06...5.261 mm ²) AWG 14...AWG 10)

Ordering and shipping details

Category	00008 - H&HU SW,2&3P,N1,30-200A
Discount Schedule	DE1

GTIN	00785901482253
Package weight(Lbs)	7.87 kg (17.35 lb(US))
Returnability	Yes
Country of origin	US

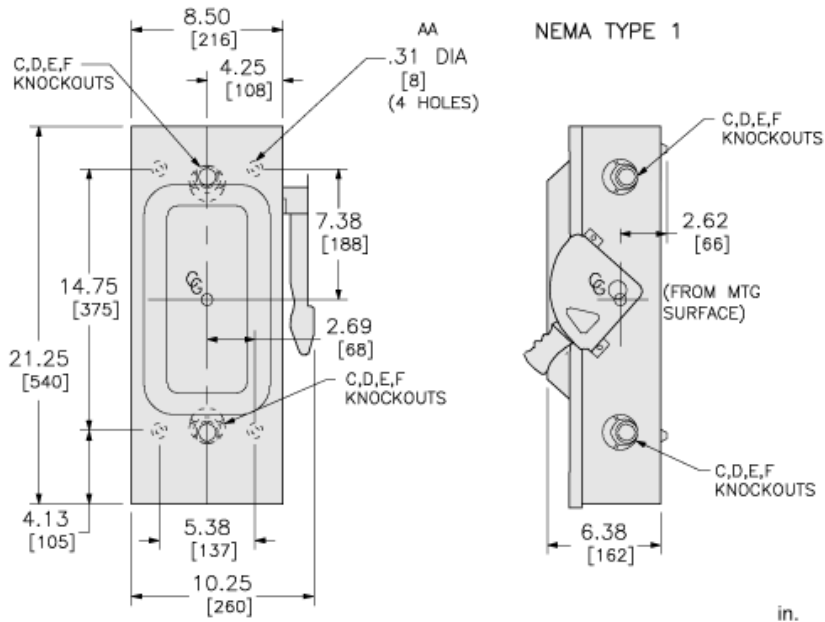
Offer Sustainability

Sustainable offer status	Green Premium product
California proposition 65	WARNING: This product can expose you to chemicals including: Lead and lead compounds which is known to the State of California to cause Carcinogen & Reproductive harm. For more information go to www.p65warnings.ca.gov
REACH Regulation	REACH Declaration
REACH free of SVHC	Yes
EU RoHS Directive	Compliant EU RoHS Declaration
Mercury free	Yes
RoHS exemption information	Yes
China RoHS Regulation	China RoHS declaration Product out of China RoHS scope. Substance declaration for your information.
Environmental Disclosure	Product Environmental Profile
Circularity Profile	No need of specific recycling operations
WEEE	The product must be disposed on European Union markets following specific waste collection and never end up in rubbish bins.

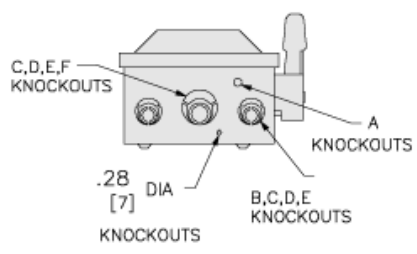
Contractual warranty

Warranty	18 months
----------	-----------

Approximate Dimensions



in.
[mm]



KNOCKOUTS				
SYMBOL	CONDUIT SIZE		DIAMETER	
	IN	MM	IN	MM
A	.50	13	.88	22
B	.75	19	1.13	29
C	1.00	25	1.38	35
D	1.25	32	1.75	45
E	1.50	38	2.00	51
F	2.00	51	2.50	64